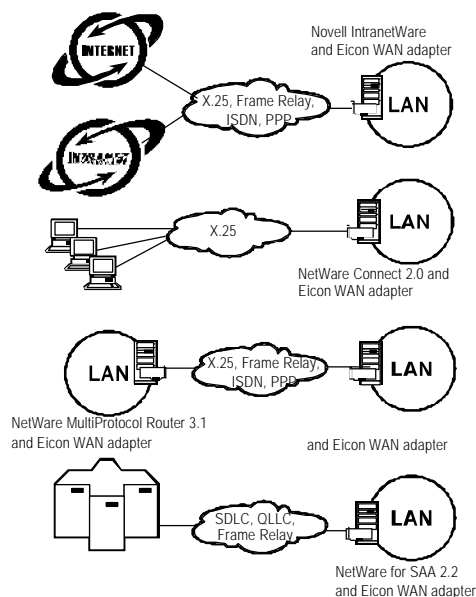


WAN Connectivity for NetWare/IntranetWare

Eicon Technology's WAN interface adapters can support the NetWare and IntranetWare environment. Using Eicon WAN interface adapters Novell applications can connect over X.25, Frame Relay, PPP and ISDN WANs.

To compete in the global economy, modern corporations must often provide remote users and offices with access to Internet, intranet and SNA resources. Doing so, in the Novell environment, often means using Novell's communication applications in conjunction with an adapter that can be used for different WAN media and on WAN networks worldwide.

Eicon's WAN interface adapters support Novell's IntranetWare, NetWare Connect, NetWare MultiProtocol Router and NetWare for SAA over a variety of wide area networks. The Eicon WAN adapter family consists of both passive and intelligent WAN interface adapters. The passive WAN interface adapters are specifically designed for high-speed dedicated leased lines. The intelligent WAN interface adapters have WAN protocol support residing directly on the card. This on-board protocol support minimizes server utilization by offloading resource-intensive protocol processing and compression onto the card. The on-board WAN protocols are also certified worldwide, making these intelligent cards solutions for global connectivity.



■ Highlights

- Intelligent and passive WAN interface adapters for NetWare/IntranetWare WAN connectivity
- Worldwide certified WAN connectivity
- X.25, Frame Relay and PPP support for Novell's IntranetWare
- X.25 support for Novell's NetWare Connect 2.0
- X.25, Frame Relay and PPP support for Novell's NetWare MultiProtocol Router 3.1
- X.25, SDLC and Frame Relay support for Novell's NetWare for SAA 2.2

WAN support for NetWare/IntranetWare

WAN Connectivity for NetWare/IntranetWare

Novell Applications	Novell's IntranetWare	Novell's NetWare Connect 2.0	Novell's NetWare MultiProtocol Router 3.1	Novell's NetWare for SAA 2.2
WAN Support				
ISDN	<ul style="list-style-type: none"> - ISDN SCOM Interface Adapter (single BRI port) - ISDN Quadro Interface Adapter (four BRI port) - ISDN S2M Interface Adapter (single PRI port) <p>Backup ISDN link</p> <ul style="list-style-type: none"> - EiconCard S51 	<ul style="list-style-type: none"> - ISDN SCOM Interface Adapter (single BRI port) - ISDN Quadro Interface Adapter (four BRI port) - ISDN S2M Interface Adapter (single PRI port) <ul style="list-style-type: none"> - DIVA client adapter (ISA board) - DIVA client adapter (PCM board) 	<ul style="list-style-type: none"> - ISDN SCOM Interface Adapter (single BRI port) - ISDN Quadro Interface Adapter (four BRI port) - ISDN S2M Interface Adapter (single PRI port) <p>Backup ISDN link:</p> <ul style="list-style-type: none"> - EiconCard S51 	—
Frame Relay	<ul style="list-style-type: none"> - EiconCard PacketBlaster 	—	<ul style="list-style-type: none"> - EiconCard PacketBlaster 	<ul style="list-style-type: none"> - EiconCard PacketBlaster
X.25	<ul style="list-style-type: none"> - EiconCard PacketBlaster - EiconCard S51 	<ul style="list-style-type: none"> - EiconCard PacketBlaster - EiconCard S51 	<ul style="list-style-type: none"> - EiconCard PacketBlaster - EiconCard S51 	<ul style="list-style-type: none"> - EiconCard S51 - EiconCard PacketBlaster
PPP (Async/sync)	<ul style="list-style-type: none"> - EiconCard PacketBlaster 	—	<ul style="list-style-type: none"> - EiconCard PacketBlaster 	—
SDLC	—	—	—	<ul style="list-style-type: none"> - EiconCard PacketBlaster

Feature	Benefit
EiconCard PacketBlaster support	High-Speed Connections: The two port passive EiconCard PacketBlaster is capable of attaining speeds of up to 2 Mbps per port, making it an ideal choice for leased line PPP connections to the intranet.
Intelligent EiconCard support	Reduced Server Utilization and worldwide connectivity: Intelligent EiconCards offload all WAN-related processing from the server onto the EiconCard. The on-board CPU offloads protocol processing as well as compression, enabling the host server to be utilized for other purposes. The on-board protocols are also certified worldwide, making this a solution which can be deployed on a global scale.
ISDN Backup (EiconCard S51)	Reliability: The secondary ISDN BRI port of the intelligent EiconCard S51 can be used as a backup link to permanent Intranet connections, thus ensuring network reliability.
IntranetWare Support	Intranet/Internet connectivity: Corporations can use Eicon's WAN interface adapters in conjunction with Novell's IntranetWare to support Intranet/Internet connectivity over a variety of WANs including Frame Relay, X.25 and PPP leased lines.
NetWare Connect Support	Remote user connectivity: Corporations can use Eicon WAN interface adapters in conjunction with Novell's NetWare Connect 2.0 to support dial up remote user connectivity via an X.25 packet-switched network.
NetWare MultiProtocol Router Support	Basic LAN connectivity: Corporations can use Eicon's WAN interface adapters in conjunction with Novell's NetWare MultiProtocol Router 3.1 to support basic LAN connectivity over a variety of WANs including Frame Relay, X.25 and PPP leased lines.
NetWare for SAA Support	Remote SNA connectivity: Corporations can use Eicon's WAN interface adapters in conjunction with Novell's NetWare for SAA 2.2 to support remote LAN connectivity to SNA hosts over X.25 and SDLC leased lines or Frame Relay networks.

Eicon Technology Corporation

Tel.: (514) 745-5500
 Fax: (514) 745-5588

In the United States, Canada, Latin America:

Tel.: 1-800-80-EICON
 (972) 239-3270
 Fax: (972) 239-3304

In Europe, Middle East, Africa:

Tel.: +44 (0) 181 967-8000
 Fax: +44 (0) 181 967-8050

In Australia, New Zealand, Asia:

Tel.: +61 (2) 9919-7200
 Fax: +61 (2) 9929-6300

Internet:

North America: sales@eicon.com
 Europe: sales.europe@eicon.com
 Asia Pacific: sales.asiapac@eicon.com
 Worldwide Web: <http://www.eicon.com/>

